

Name: _____

Date: _____

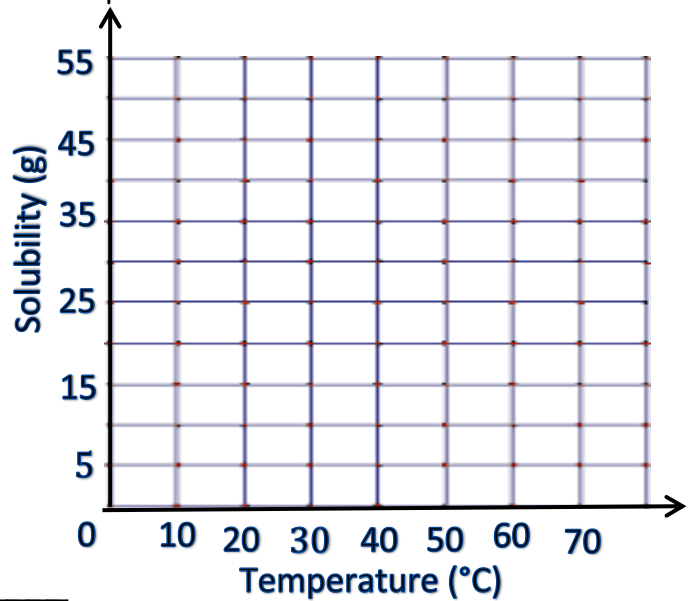
Science _____

Heat Practice WS

It is easier to dissolve soluble substances in warm water than in cold water. However, heat increases the solubility of some substances more than others.

Make a line graph to plot the data from the table. Connect all points after they are plotted. The data illustrates the solubility of table salt and Epsom salts as temperature increases.

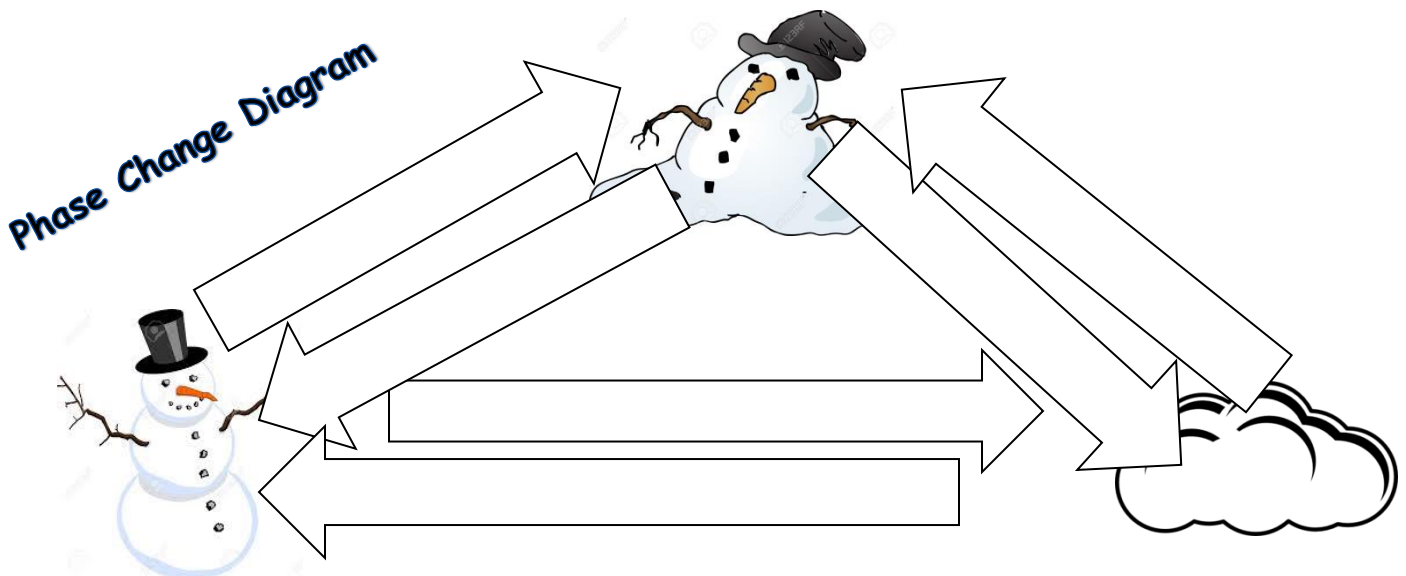
Temperature (°C)	Amount dissolved per jug (g)	
	Salt	Epsom salt
20	10	20
30	12	30
40	14	40
50	16	50
60	18	55



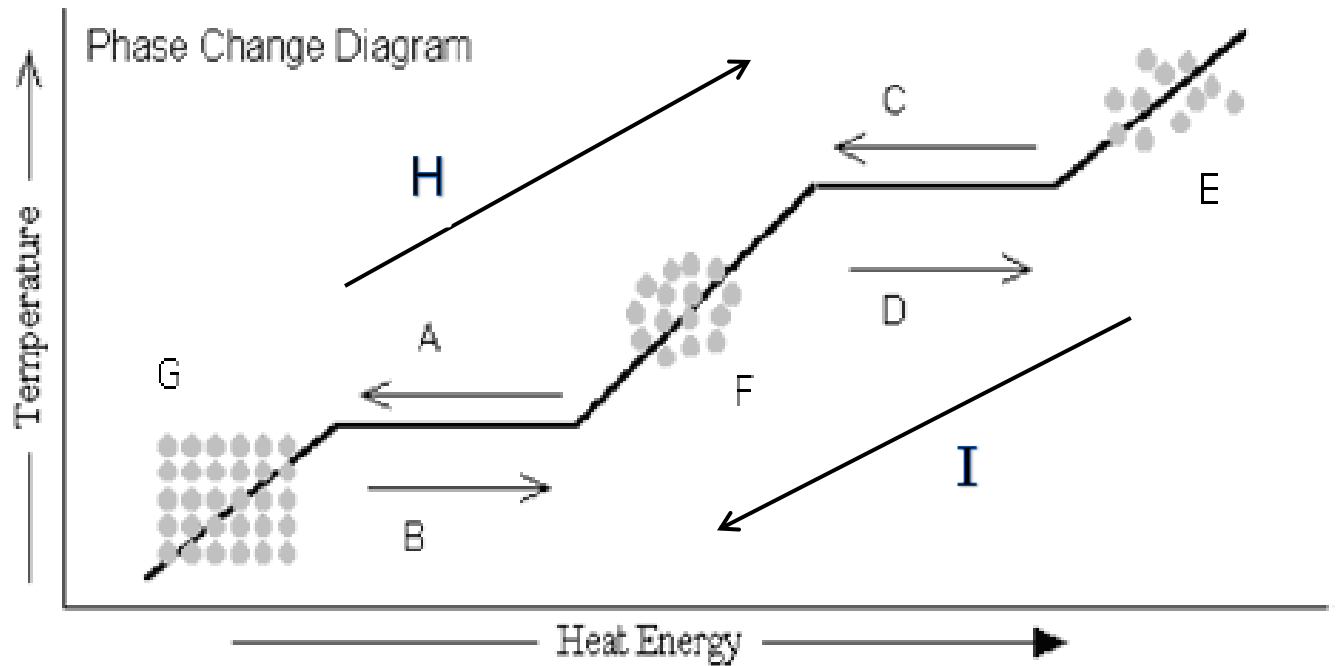
1. Do you see a relationship between temperature and the solubility of table salt? Explain.

2. Is this relationship the same for Epsom salts? Explain. _____

3. Describe any differences temperature has on the solubility of Epsom salts as compared to table salt.



Use your science knowledge and the diagram below to answer questions 1-



Identify these **states** of matter from the diagram above:

1. G: _____ 2. F: _____ 3. E: _____



Identify these **phase change** and **letter** from the situations below.

4. Batman cried when his popsicle quickly turned to liquid. _____
5. Frozone saves the day by turning Batman's popsicle back to a solid. _____
6. Super Girl protected the city by turning the destructive tidal wave into clouds. _____
7. Mr. Freeze caused chaos by turning the clouds into jagged icicles falling from the sky. _____
8. Captain Marvel easily changes the sharp icicles into steam and protects the citizens from harm. _____
9. As Mr. Freeze tried to make a fast getaway, he slipped on dew on the ground where Ant Man was able to apprehend him. _____

